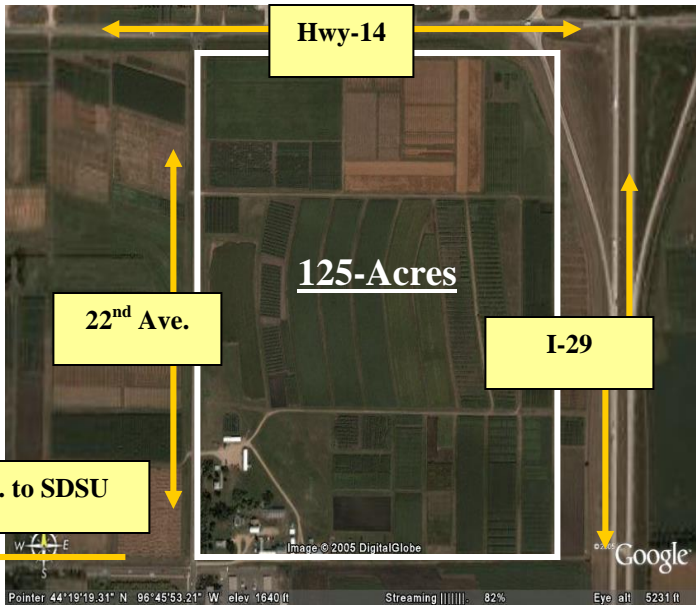


Site Profile

Research Park (SDSU Innovation Campus) – Brookings, South Dakota

South Dakota State University Innovation Campus
(125-acre Research Park)

City: Brookings **County:** Brookings
Micropolitan Area: Brookings



General Site Data

Total Acres	125-acres
Available Acres	80.3 acres
Number of Parcels	32 parcels
Number of Available Parcels	28 parcels
Largest Parcel	5.6 acres
Smallest Parcel	2.0 acres
Option for Multi-Parcels	Yes
Protective Covenants	Yes
Architectural Guidelines	Yes
Site & Landscape Guidelines	Yes
Soil Data Available	Yes
Topography	Flat
Zoning	Education & Research
Previous Use	Agronomy Research

Site ID – SDSU Innovation Campus

Street Address	2300 Research Park Way
Nearest City	Brookings
Within City Limits	Yes
Zip Code	57006
Located in Industrial Park	No
Location next to Research University -	Yes
	South Dakota State University
Type of Property	125-acre Research Park

Transportation

Rail Service (less than 1 miles)	DM & E
Nearest Commercial Air City	
	Brookings, SD & Sioux Falls, SD
Adjacent Highways -	
I-29 Interstate	4 lanes
Hwy 14	2 lanes

Utilities

Water -

Provider: Brookings Municipal Utilities
 Status: Existing

Sewer -

Provider: Brookings Municipal Utilities
 Status: Existing

Natural Gas -

Provider: Northwestern Energy

Electricity -

Provider: Brookings Municipal Utilities
 Status: Existing

Service: 6 mega watts/expandable

Redundancy: Redundant path

Telecommunications -

Provider: Swiftel Communications

Fiber Optics: Yes

Redundancy: Diverse Protected Route

Site Profile

Research Park (SDSU Innovation Campus) – Brookings, South Dakota

South Dakota State University Innovation Campus
(125-acre research Park)

City: Brookings **County:** Brookings
Micropolitan Area: Brookings

Price & Summary

Lease Price -

** Contact Teresa McKnight*

Property Summary -

- 125-acre Research Park
- Excellent visibility and connectivity to I-29
- Adjacent to South Dakota State University
- Excellent services and amenities
- Partnership opportunities with South Dakota State University Researchers and Faculty
- Access to SDSU Students (Undergraduate and Graduate)

Contact Information

Teresa W. McKnight
 CEO & Executive Director
 South Dakota State University Innovation Campus
 Email: teresa.mcknight@sdstate.edu

Cellular: (605) 690-5363
 Phone: (605) 696-5600
 Fax: (605) 696-5605
 Website: www.sdstate.edu/innovationcampus

Development:

- Parcels 1 & 2 (Seed Tech Lab)
- Parcel 6 (under negotiation)
- Parcel 29 (Innovation Center Bldg.- Phase I)
- Parcel 30 (Innovation Center Bldg.- Phase II)
- Parcels 17, 18 & 32 (under negotiation)

Availability:

- Parcels 3 - 5
- Parcels 7 - 13
- Parcels 14 - 16
- Parcel 19
- Parcels 20 - 24
- Parcels 25 - 28
- Parcel 31

