

Site Profile

Arlington Site Selection Database

Arlington Industrial Park



City: Arlington County: Kingsbury
 Micropolitan Area: Brookings

General Site Data	
Total Acres	46.5
Available Acres	46.5
Additional Available	No
Largest Tract	Negotiable
Smallest Tract	Negotiable
Fire Rating	8
Protective Covenants	
Soils Data Available	Yes
Topography	Gentle slope to SE
Zoning	Highway Commercial
Previous Use	Agriculture

Site Id:	
Street Address	700 Industrial Avenue
Nearest City	Arlington
Within City Limits	Yes
Zip Code	57212
Located in Industrial Park	Yes
Park Name:	Arlington Industrial Park

Transportation	
Rail Service	DM&E

Nearest Commercial Air City	Brookings
Miles to Nearest Service:	20

Utilities		
Water	Provider:	Kingsbrook Rural Water
	Status:	Adjacent to site
	Size of Main:	6"
Sewer	Provider:	City of Arlington
	Status:	Adjacent to site
	Size of Main:	8"
Natural Gas	Provider:	Northwestern Energy
	Status:	Adjacent to site
	Size of Main:	8"
Electricity	Provider:	City of Arlington
	Status:	Adjacent to site
	Phase:	3
Telecommunications	Provider:	Qwest Corporation
	Fiber Optics:	No
	DSL Available:	Yes

Highways			
Highway Type	Highway Name	Miles to Access	Four Lane
Interstate	I-29	20	Yes
Federal Highway	US Hwy 14	0	No
Federal Highway	US Hwy 81	0	No

Price	
Sale Price	\$15,000 per acre
Negotiable?	Yes
Date Quoted	May 1, 2007

General Comments
 Price includes water, sewer, and road. Lot size are negotiable based on need. Information deemed reliable but not guaranteed.

Site Profile

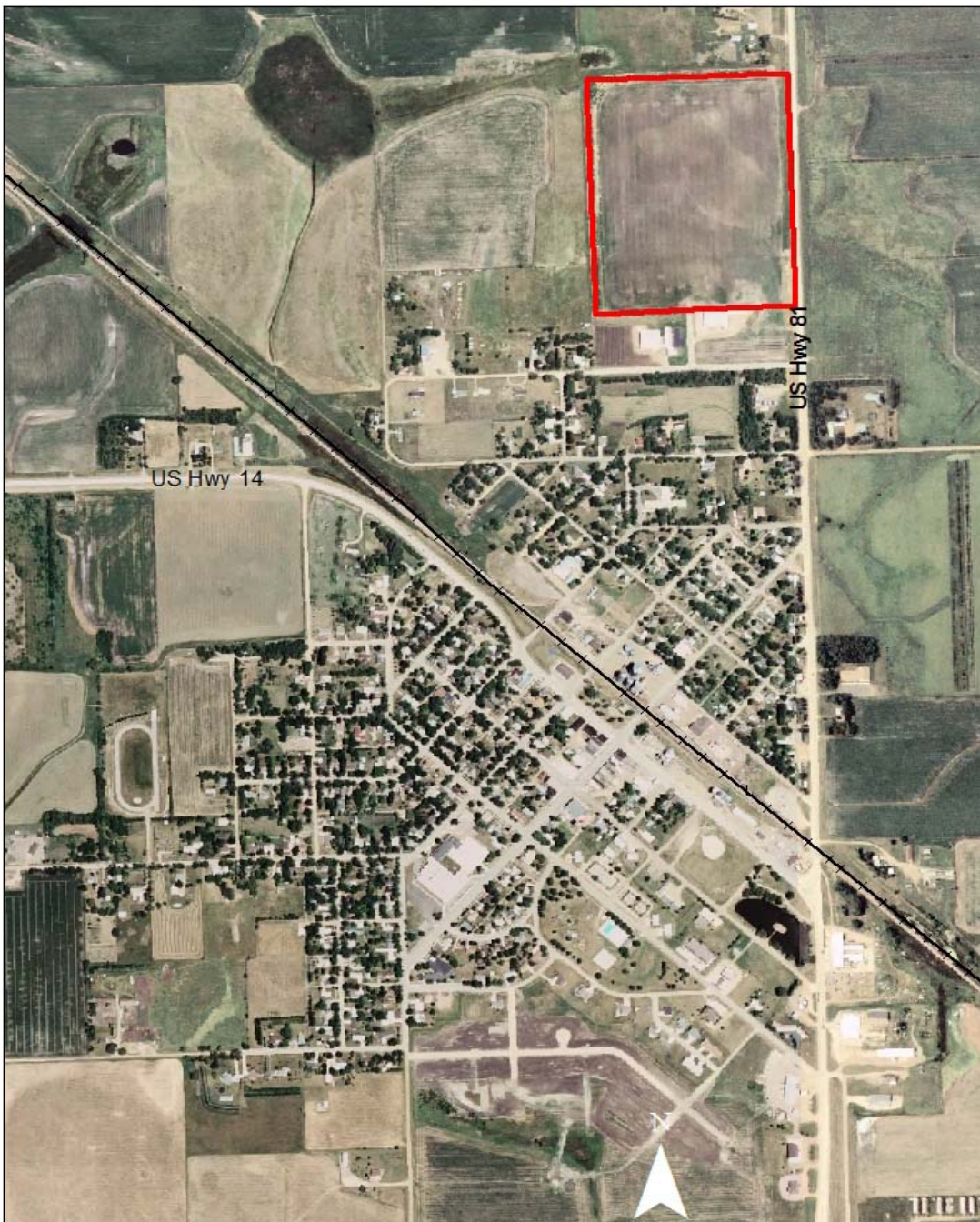
Arlington Site Selection Database

Arlington Industrial Park

City: Arlington County: Kingsbury
Micropolitan Area: Brookings

Contact Information

Al Heuton
Brookings Economic Development Corporation
414 Main Avenue
Brookings, SD 57006
Phone: (605) 697-8103
Fax: (605) 697-8109
Email: bedc@brookingsd.us



Site Profile

Arlington Site Selection Database

Arlington Industrial Park

City: Arlington County: Kingsbury
Micropolitan Area: Brookings

